

**PROCON ADVISORY SERVICES INDIA PRIVATE LIMITED**

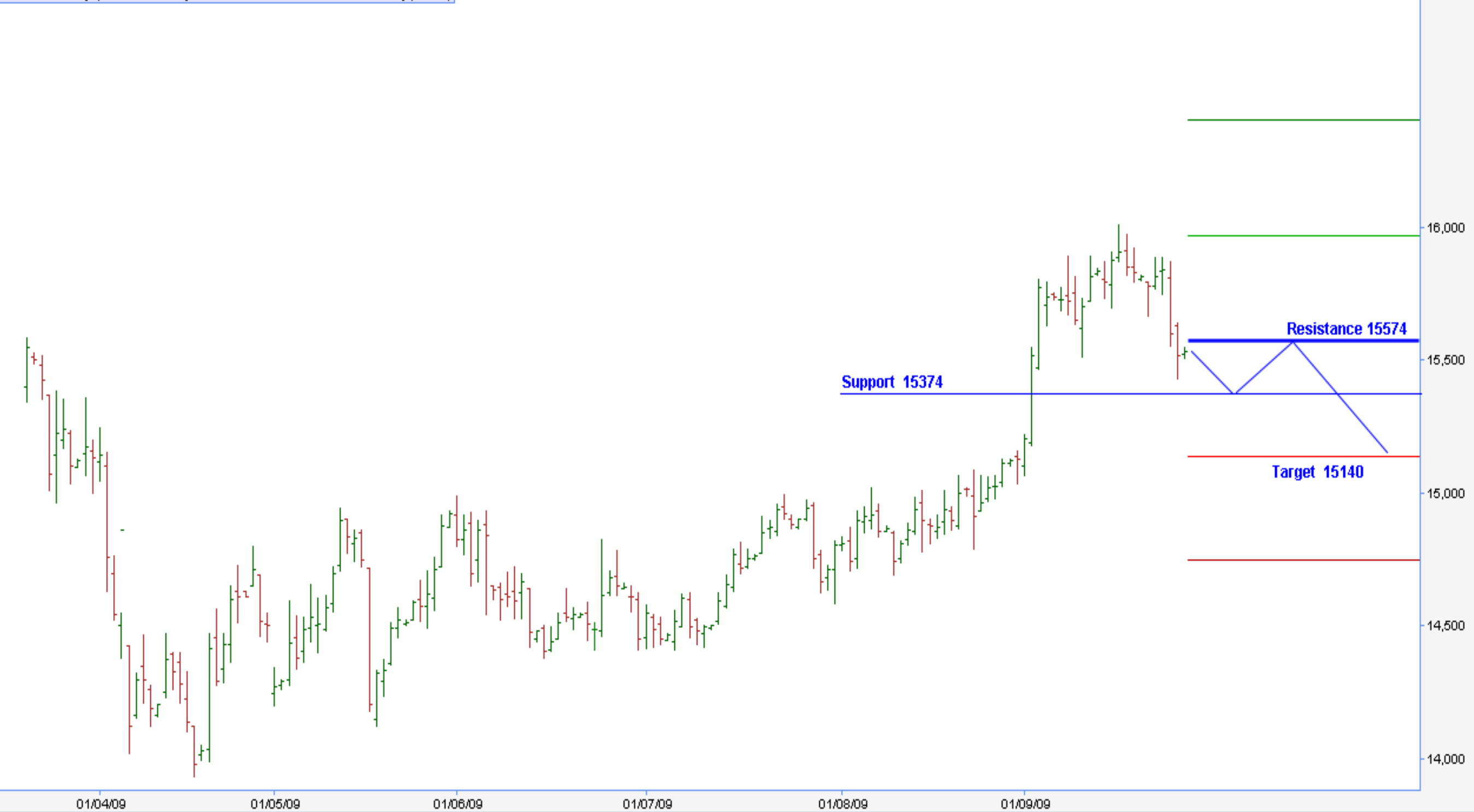
**PREMIUM WEEKLY RESEARCH REPORT**

**26/09/2009**

---

GOLD MCX

GOLD-MX-1M [Open: 15,521 High: 15,548 Low: 15,508 Close: 15,534] (+0.1%)



# SILVER MCX

SILVER-MX-1M [Open: 25,869 High: 25,911 Low: 25,855 Close: 25,882] (-0.0%)



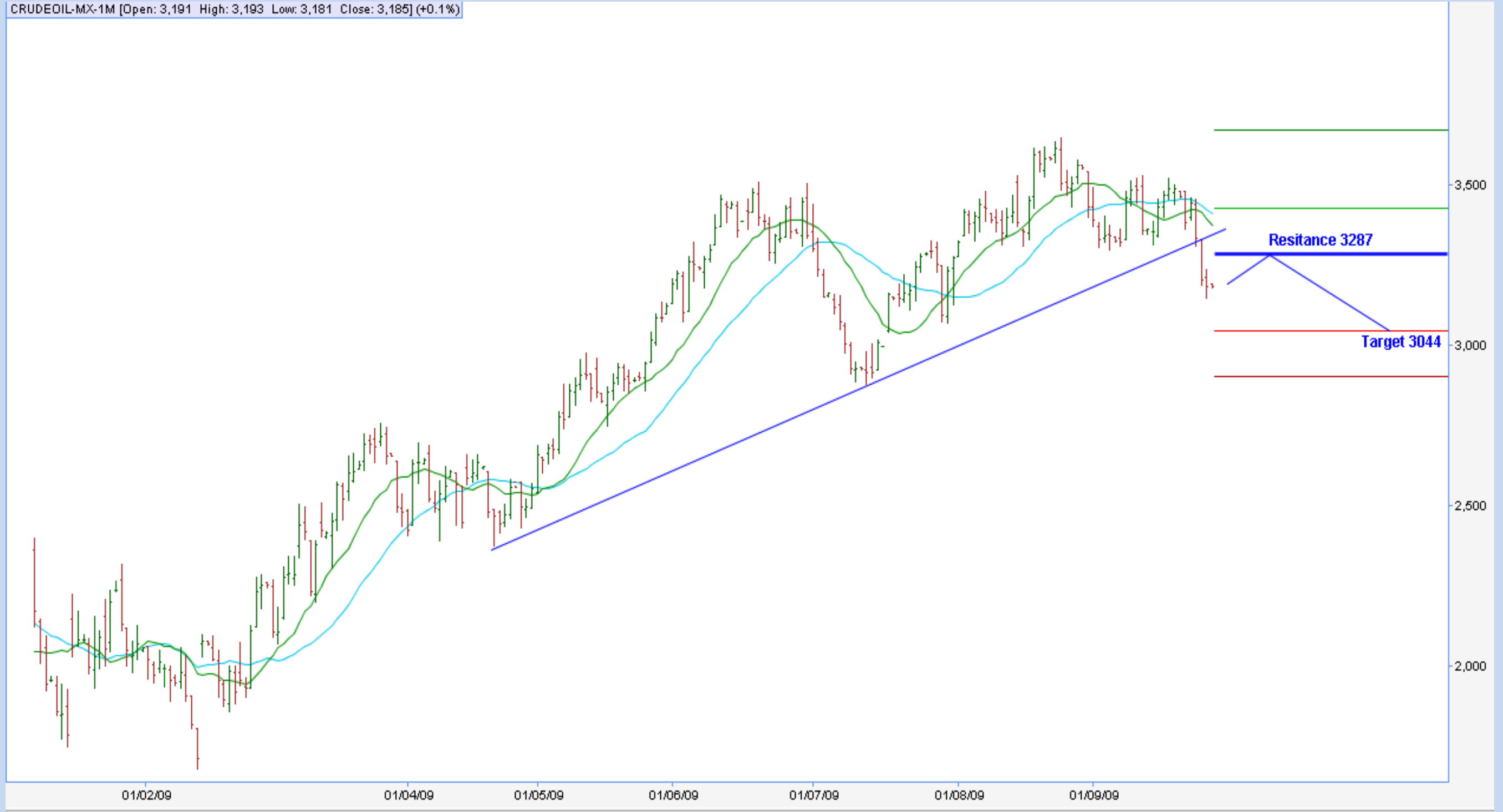
# COPPER MCX

COPPER-MX-1M [Open: 292 High: 292 Low: 291 Close: 291] (-0.1%)



# CRUDEOIL MCX

CRUDEOIL-MX-1M [Open: 3,191 High: 3,193 Low: 3,181 Close: 3,185] (+0.1%)



# NATURAL GAS MCX

NATURALGAS-MX-1M [Open: 236 High: 238 Low: 236 Close: 238] (+1.8%)



# ZINC MCX

ZINC-MX-2M [Open: 90 High: 90 Low: 90 Close: 90] (-0.4%)



# LEAD MCX

LEAD-MX-2M [Open: 105 High: 105 Low: 104 Close: 104] (-0.5%)



# REFSOYOIL MCX

REFSOYOIL-MX-1M [Open: 446 High: 449 Low: 443 Close: 448] (+0.3%)



**DISCLAIMER**

This Report has been prepared by Procon Advisory Services India (P) Ltd., .The Information, Analysis and Estimates contained herein are based on our branch research assessment and have been obtained from sources believed to be reliable. This document is meant for the use of intended recipient only. Procon Advisory Services India (P) Ltd., Directors and its Employees shall not in any way be responsible for the contents stated herein. This document is not to be considered as an offer solicitation to buy any commodities. All future trading entail significant risk, which should be fully, understood prior trading.

Procon Advisory Services India (P) Ltd., #509, Red Rose Plaza, D.B.Road, R.S.Puram, Coimbatore – 641002 Web Site – [www.indiaprocon.com](http://www.indiaprocon.com)

**FOR PRIVATE CIRCULATION ONLY**